



# WATES LMP ACTION

# SOCIAL IMPACT REPORT 2024



# TABLE OF CONTENTS

## **03**

LMP Action C.I.C

## **04**

Our Partnership

## **06**

Programme Objectives

## **07**

Camp Overview

## **13**

Impact and Reach

## **11**

Feedback

## **13**

Case study

## **16**

Partnerships

# LMP ACTION C.I.C

LMP Action is a Community Interest Company (CIC) dedicated to delivering impactful educational and enrichment programmes that support the development and wellbeing of young people. Our work focuses on creating opportunities for personal growth, skill and career development, and positive community engagement through various tailored programmes, including transition, holiday and residential camps; career workshops, work experience and Alternative Provision.

We aim to create inclusive environments where every young person can thrive, build confidence, and develop the necessary tools to succeed in their future endeavours. Our programmes are designed with sustainability and community impact in mind, ensuring that the benefits extend beyond the immediate participants to the wider community and environment.





# OUR PARTNERSHIP

Over the past six years, our partnership with Wates Construction has been a cornerstone of our efforts to inspire and nurture the next generation of construction professionals.

Through our collaborative residential camps, we have reached young people nationwide, delivering impactful programmes at locations such as Brunel University, Loughborough University, De Montfort University and now The University of Salford. These camps have provided invaluable hands-on experiences, fostering a genuine interest in construction careers among young people.

In addition to our residential camps, we have previously supported year 6 students in their critical transition to year 7 through specialised design programmes. This initiative, which ran successfully for three years, equipped young learners with essential skills and confidence as they moved into secondary education.

# OUR PARTNERSHIP

This year, we are thrilled to report the success of our residential camp in Salford, where we supported 28 young people over an enriching four-day experience. This latest camp demonstrates our continued commitment to positively impact young people's lives, encouraging them to explore and pursue opportunities in the construction industry.

Our ongoing collaboration with Wates Construction is a testament to what can be achieved when we join forces with a shared vision.



# PROGRAMME OBJECTIVES

- 1 Career Awareness:** Introduce participants to various roles within the construction sector, helping them understand the breadth of career paths available.
- 2 Practical Experience:** Allow young people to visit live construction sites and gain firsthand knowledge of how housing developments are planned, produced, and built.
- 3 Skill Development:** Equip participants with practical skills by using graphic architecture tools to design and plan structures, and then engage in physical building activities with the guidance of professional tradespeople.
- 4 Understanding Social Value:** Educate participants on the social value and impact of construction projects, particularly how companies like Wates contribute to communities beyond just building structures.
- 5 Building Confidence and Independence:** Provide many young participants with their first experience away from home, fostering personal growth, confidence, and independence.
- 6 Hands-On Learning:** Facilitate a day-long project where participants create a two-storey structure, reinforcing teamwork, problem-solving, and construction skills.

# DAY ONE

The residential camp began with young people arriving from various parts of the country, eager to begin their week-long experience.

For many of the young attendees, this marked their first time away from home, leading to a mix of nervousness and excitement. Despite these initial feelings, the participants quickly began to bond through a series of team-building games and activities designed to encourage connection and collaboration. These activities provided an excellent opportunity for the young people to get to know one another and share their motivations for attending the programme. The early interactions set a positive tone for the rest of the week, laying the foundation for strong relationships and a meaningful experience.



# DAY TWO

The camp began with an exciting day of water sports, including kayaking, raft building, sailing, and paddle boarding. These activities provided a fun and engaging way for young people to meet each other and build teamwork and communication skills, ready for an exciting week ahead!

In addition, Adam Corbally, the runner-up on *The Apprentice*, shared his entrepreneurial journey in an inspiring session. He offered valuable insights into starting a business and the importance of motivation and perseverance. His stories and advice encouraged participants to think creatively and ambitiously about their futures, especially within the construction industry.

These initial activities established a strong sense of teamwork and motivation among the participants, setting the tone for a week of learning and growth in construction and community development.





# DAY THREE

Day three provided an eye-opening experience as the group visited Rodney Street - a Wates live construction site in Manchester. Once a neglected area, the site now exemplifies Wates' commitment to community revitalisation through the development of a new housing estate and community-focused initiatives.

During their time on site, participants were privileged to meet with Wates' CEO, Eoghan O'Lionaird, alongside project development, site, and design managers. These discussions offered a deep dive into the intricacies and complexities involved in housing development, from the initial planning stages to the final execution. They gained valuable insights into the broader social impacts of such projects, including economic revitalisation and enhanced community wellbeing. Particularly compelling was Wates' proactive efforts to support the reintegration of ex-prisoners into the workforce, showcasing the company's strong commitment to social responsibility and inclusive employment practices.



Following this experience, the day continued at Future Skills College with the 'Construkt programme' run by 'Serious About Youth'. Here, young people immersed themselves in the world of digital construction through Building Information Modelling (BIM). Through hands-on activities, they learned to model their own construction projects, develop method statements, and analyse cost implications. These interactive sessions aimed at encouraging interest in digital construction technologies, offering a fresh perspective on the industry and highlighting the pivotal role of digital tools in modern construction practices.



# DAY FOUR

Day four was a focal moment in the camp, highlighting the culmination of their learning with the 'big build' at Future Skills Construction College. Armed with their BIM designs, young people worked with industry professionals to construct a large-scale model. Wates staff from the local area volunteered to help facilitate the day. This hands-on project allowed them to translate their theoretical knowledge into practical experience, providing a thorough overview of the construction process.

Young People were divided into teams, with each member taking on specific roles such as project manager and finance manager. This setup offered a realistic glimpse into the varied nature and diverse skills required for successful construction projects. They faced and overcame challenges together, highlighting the importance of communication, coordination, and leadership in bringing a project to life.



# DAY FIVE

On the final day, young people had the opportunity to showcase their newly acquired skills by working in teams to create presentations for their own housing development projects. They were tasked with considering design, construction methods, financial feasibility, and the social value their projects would bring to their chosen communities.

This exercise pushed them to think both critically and creatively, integrating all aspects of their camp experiences. Drawing on the knowledge gained from site visits, hands-on activities, and expert sessions, they combined architectural design with practical construction techniques to develop innovative and realistic plans.

They also tackled the financial side of their projects, calculating costs and managing budgets to gain a practical understanding of economic planning in construction. Emphasising the importance of social impact, young people explored how their developments could benefit communities, promote social welfare, and improve quality of life.



# 28

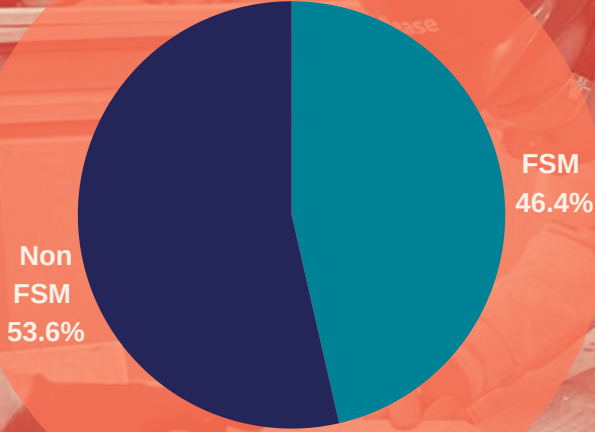
## Young people

### 8 Female

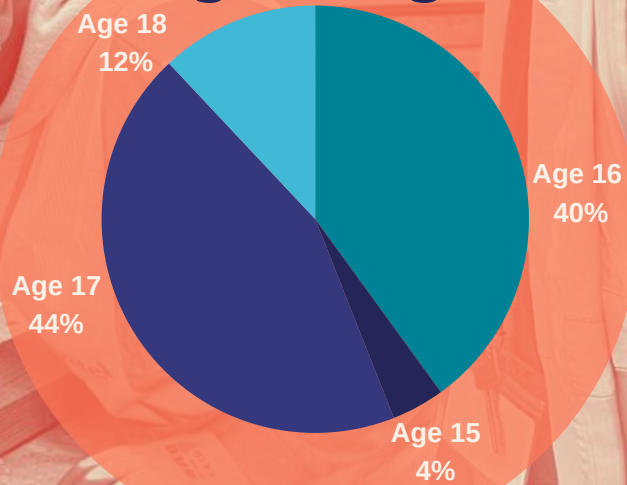
### 20 Male



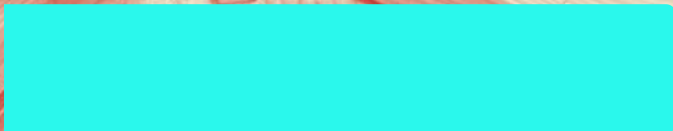
### Free School Meals



### Age Range



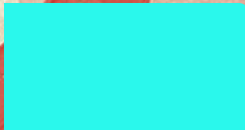
White



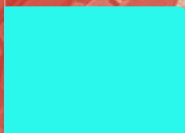
Black, African, Caribbean or Black British



Mixed or Multi Ethnic Group



Asian or Asian British



Other Ethnic Group



Year 1

# IMPACT

# REACH

Young people are recruited from across the country. Young people go through an application process and are selected based on their desire to work in the construction industry.

**Newcastle**

**Leeds**

**Leicester**

**Suffolk**

**Wales**

**London**

**Kent**



“

My time at camp gave me so many opportunities I didn't know existed. I've got a drive to pursue a career in construction.

”



100% of young people said they would recommend the residential camp to others

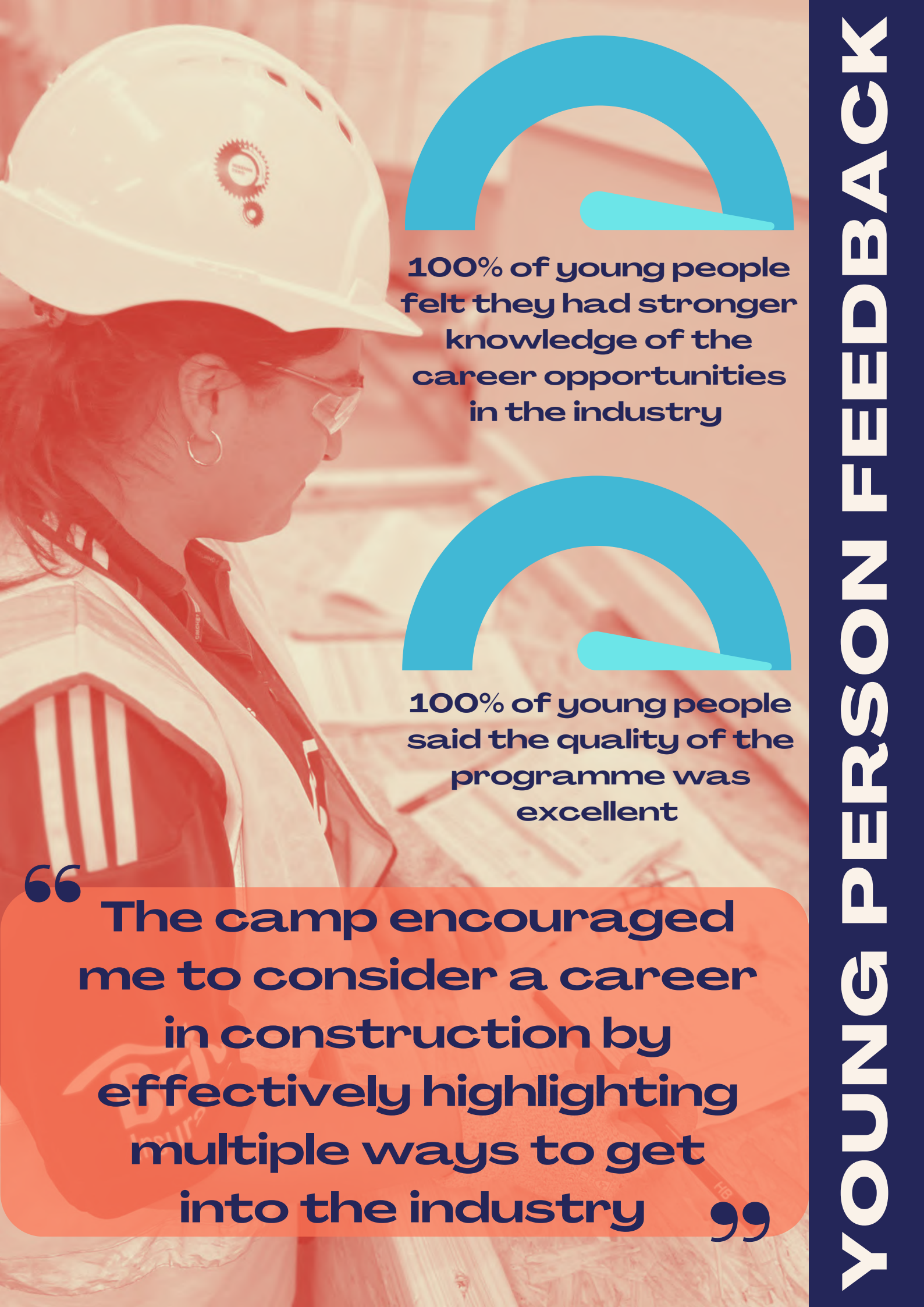
“It was so much fun getting hands-on practical experience. I really enjoyed working as a team.”

“Wates is a company I want to work for. I loved learning about their social impact. It's something I want to pursue”.



78% of young people thought the construction industry seemed exciting

YOUNG PERSON FEEDBACK



**100% of young people felt they had stronger knowledge of the career opportunities in the industry**



**100% of young people said the quality of the programme was excellent**

**“ The camp encouraged me to consider a career in construction by effectively highlighting multiple ways to get into the industry ”**



“  
My son has  
come home  
with some  
amazing  
experiences,  
and learnt  
so much  
especially  
teamwork  
with others  
he had never  
met before.  
What a  
fantastic  
job you have  
all done, my  
sincere  
thanks to  
you all ”

“” We would like to thank you  
and Wates for the  
opportunity that my  
daughter has had to do his  
works experience at your  
company.  
Thank you for all the work  
you have put into this  
experience. He sounds like he  
has had a wonderful time”



**PARENT FEEDBACK**

# CASE STUDY

Chidi is a year 12 student attending Hendon School in London. She wanted to participate in the residential camp to explore the career opportunities available to her within the construction industry.

Chidi felt the camp blend of fun team-building activities with professional development opportunities allowed opportunities for personal growth as well as hands-on experience in the construction industry.

Chidi secured an internship with Wates and found the introduction to the industry through the residential camp helpful in understanding her options. She found the internship gave her an insight into the company's culture and expectations too.

After understanding the impact Wates has on local communities, Chidi would like to continue her career in construction through social impact.



## Serious About Youth

SAY is a youth-focused social enterprise based in London. We specialise in developing innovative interactive and effective educational workshops and employability training.

The Construkt programme offers young people an exciting pathway into the engineering and construction industry.

## Salford City College

Salford City College is a top educational institution in Greater Manchester, known for its excellent vocational and academic training. During the residential trip, we partnered with them to use their advanced facilities. Their design labs allowed us to create detailed BIM designs, while their construction college enabled us to build full-scale models, providing valuable hands-on experience.

## Adam Corbally's Love Life

Partnering with Adam Corbally's Love Life was a transformative experience for the young people involved. Adam's engaging and relatable approach resonated deeply with them, providing motivation and encouragement to tackle challenges with confidence. The young people gained practical tools for personal growth and future success.



# LMP ACTION

10 Bloomsbury  
Way  
WC1A 2SL

Natalie Glasby  
Head of Programmes  
[Natalie@Imp-action.co.uk](mailto:Natalie@Imp-action.co.uk)

Louise Lear  
Programme Manager  
[louise.lear@Imp-action.co.uk](mailto:louise.lear@Imp-action.co.uk)