

Teaching Assistant **SEND Pathway**

LEVEL 3 APPRENTICESHIP PROGRAMME

Developing skilled SEND Teaching Assistants
to support within your school.

**ADDITIONAL
LEVEL 2
QUALIFICATION**

NCFE

to deepen SEND expertise
and support progression

INVEST IN YOUR TEAM

- High Quality Training
- Industry Relevant Content
- Commitment to Excellence
- Expert Support and Mentoring
- Excellent Safeguarding and Wellbeing
- Focus on Personal and Professional Development

#INSPIRINGAMBITION



PROGRAMME SUMMARY

3

Apprenticeship level
Level 3 Advanced



Typical duration
16 months total
(14 months + 2 months EPA)



Training method
Blended Learning



Assessment method
Portfolio



Cost/funding value
£0/£7,000



EPA organisation
NCFE

About the Programme

This Level 3 SEND Pathway Teaching Assistant Apprenticeship provides rewarding and fulfilling career path involving hands-on training and valuable experience in an educational setting to support pupils with Special Education Needs and Disabilities (SEND).

This programme also includes an additional Level 2 qualification accredited by NCFE to deepen SEND expertise and support progression.

Who is this programme for?

This programme is ideal for learners who are passionate about education with a particular interest in SEND and are looking to get into a career in teaching or are currently working as Teaching Assistants and would like to upskill and gain a qualification.

A learner should choose this route if they are passionate about advocating for children with SEND and ensuring they are heard and supported. Support the implementation of SEND policy, processes, and procedures. They will support learning for those learners with SEND.

Employer Benefits

Taking on a **SEND** Teaching Assistant Apprentice is a valuable investment for employers looking to strengthen their team and nurture future talent in the education sector.

- **Tailored Training for SEND:** Apprentices are trained with a focus on inclusion, differentiation, communication strategies, and behaviour management—all vital for supporting SEND pupils.
- **Immediate Impact:** As they learn, apprentices provide one-to-one or small group support, helping pupils with EHCPs, autism, speech & language needs, SEMH, and more.
- **Support for Teachers & SENCOs:** Apprentices can take on routine support tasks, freeing up time for teachers and specialist staff to focus on planning and interventions.
- **Improved Outcomes for SEND Pupils:** With more support available, students with SEND often make stronger progress and feel more included.
- **Supports Ofsted & Inclusion Goals:** Investing in trained SEND support staff demonstrates your school's commitment to inclusive education and can strengthen inspection outcomes.
- Hiring an apprentice is a cost-effective way to grow your team. This apprenticeship is government-funded and can be funded using the apprenticeship levy.
- Apprentices are trained on the job, allowing you to shape their skills to fit your school's specific needs. Apprenticeships open doors for people from different backgrounds, helping schools reflect their communities.

Teaching Assistant SEND Pathway

LEVEL 3 APPRENTICESHIP PROGRAMME

Typical Job Roles

Teaching Assistant, SEN Teaching Assistant, Higher Level Teaching Assistant, Specialised Teaching Assistant, Teacher.

Progression Routes

As well as ensuring full competency as a Teaching Assistant, this standard provides a foundation for potential progression into a number of career paths in the educational sector. These roles include the SEND Higher-Level Teaching Assistant, Specialist Teaching Assistant, Assistant Teacher and Teacher.

LMP Education offers various progression paths for this apprenticeship including a [Level 4 Higher Level Teaching Assistant SEND Pathway Apprenticeship](#) and a [Level 5 Specialist Teaching Assistant Apprenticeship](#).

Discover our [Teaching Assistant Development Programme](#)!

Career Pathways



Higher Level Teaching Assistant SEND
Level 4



Specialist Teaching Assistant SEND
Level 5

#INSPIRINGAMBIITION

Learner Benefits



Recognised Qualification: upon completion of this programme, you will receive a nationally recognised certification.



Impact Lives Daily: You'll support pupils with a range of needs—autism, ADHD, speech & language, SEMH, physical disabilities—and help them thrive.



Specialist Knowledge: You'll gain training in areas like autism strategies, Makaton/PECS, sensory needs and differentiated instruction.



In-Demand Skills: SEND experience is highly valued across the education sector—especially as inclusion becomes more of a priority.



Teaching Assistant Development Programme: access a suite of Anspear CPD courses designed to support TAs with additional skills and knowledge.



Career pathway: this apprenticeship programme offers a potential fast track to a Higher-Level Teaching Assistant Apprenticeship or Specialist Teaching Assistant.



Ongoing support: access to a LMP Tutor providing 1-2-1 support throughout your apprenticeship.

What will you learn

As a SEND Teaching Assistant apprentice, you will develop a wide range of skills including developing learning strategies for pupils, embedding effective behaviour management strategies, and recognising, adapting and responding to all pupils encompassing SEN/emotional vulnerabilities.

In this comprehensive Level 3 programme you will gain knowledge that will be able to implement in your day-to-day role such as understanding the need to provide feedback, recognising the different stages of child development through school, understanding the need to accurately observe, record, and report on pupils' participation, conceptual understanding and progress.

You will support the implementation of SEND policy, processes and procedures. Gain confidence by building skills and knowledge, whilst preparing for the responsibility of influencing positive SEND outcomes.

At the end of the programme (at Gateway), you can choose from one of three specialist Level 2 qualifications in SEND, tailored to different areas of interest and need. These courses are: Understanding Children and Young People's Mental Health, Understanding Specific Learning Difficulties and Understanding Autism. Delivered fully online, with support and assessment from LMP tutors.



Off the job training

Off-the-job hours are a vital part of this apprenticeship. Training is directly relevant to the programme and can take many forms, including:

- Individual study time for reflection and growth
- Apprenticeship tutor sessions and webinars
- Group learning opportunities (like inset days)
- Shadowing experienced colleagues
- Mentoring from line managers
- 1:1 performance reviews and feedback
- Attending meetings and briefings
- Learning new policies
- Relevant YouTube/TV shows
- Professional development
- Online courses
- Enrichment activities
- Research and learning
- Collaborative planning/resource preparation

At LMP, the supportive tutors will work closely with you to create a personalised training plan that meets all requirements for this programme.



Striving for a Distinction - we provide distinction criteria for all apprentices and encourage everyone to strive for the best outcome.

End point assessment

End-point assessment (EPA) is **an independent assessment that takes place at the end of the apprenticeship training**. This is to test that the apprentice is competent in their occupation. All apprentices must complete an EPA. There are a variety of assessment methods to test apprentices' competency.

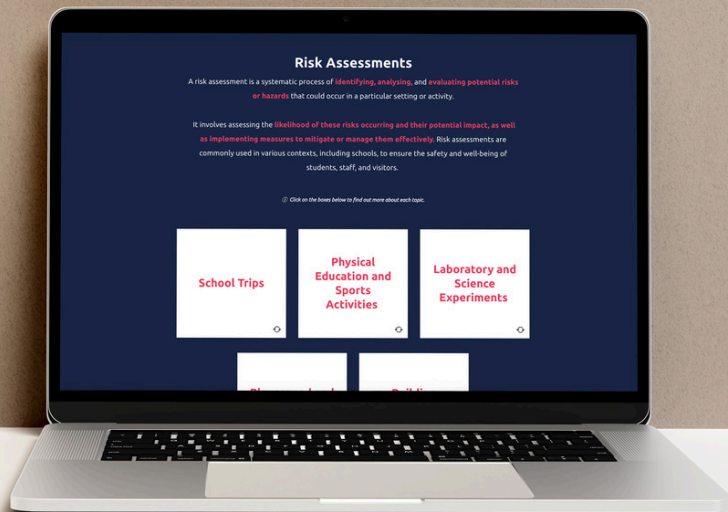
Gateway

Gateway takes place before an EPA can start. LMP Education will work with the employer to **review their apprentice's knowledge, skills and behaviours**. This period of time is used to see if the apprentice has met the requirements of the apprenticeship set out in the apprenticeship standard, and they are ready to take the assessment.

Functional Skills

LMP Education provides functional skills support to all our learners. While functional skills are no longer a requirement for learners who are 19+, LMP still offers functional skills training for those who choose to take the qualification.

[Learn more about functional skills at LMP →](#)



MILESTONES OF LEARNING

Teaching Assistant
SEND Pathway

LEVEL 3 APPRENTICESHIP PROGRAMME



NCFE
Additional
Level 2
Qualification



Programme Complete

Learning
Strategies



Curriculum



Technology



Health & Safety



The Role of a
Teaching Assistant



Assessment



Exploring Behaviour



Child
Development



Safeguarding



LMP EDUCATION
TRAINING PROVIDER



MODULES INCLUDE

The Role of a Teaching Assistant

Content includes: Classroom Support, Building Positive Relationships



Person First Approach, Understanding SEND Support

Safeguarding

Content includes: Keeping Children Safe in Education and Prevent



Understanding Increased Vulnerability, Recognising Signs of Abuse in Learners with SEND, Multi-agency and EHCP

Health & Safety

Content includes: Policies and Procedures, Handling Incidents, Risk Assessments



Creating a Safe, Communicative Environment

Child Development

Content includes: Developmental Milestones, Theories of Child Development



Interpret and adjust age related expectations for learners working below or above standard developmental milestones

Exploring Behaviour

Content includes: Understanding Behaviour Types, Mental Health and Well-being



MODULES INCLUDE

Technology

Content includes: How Technology Can Support Learning, Benefits of Technology



Using Technology to Support Learning and Inclusion

Curriculum

Content includes: Curriculum, Enrichment Activities



Adapting Learning Expectations and Materials for Diverse Learners

Assessment

Content includes: Learning, Assessment & Feedback Cycle, Feedback & Target Setting



Understanding the Purpose of Feedback for SEND Learners, Adapting Feedback Approaches, Individualised Feedback Linked to Support Plans

Learning Strategies

Content includes: The Importance of Differentiation, How to Deliver Intervention Sessions



Understanding Augmentative and Alternative Communication (AAC), Scaffolding for SEND: Supporting Every Learner to Succeed

Additional Level 2 Qualification

Choose from one of three specialist Level 2 qualifications: These are Understanding Children and Young People's Mental Health, Understanding Specific Learning Difficulties and Understanding Autism



LMP EDUCATION
TRAINING PROVIDER

Why LMP Education

LMP Education is an award winning training provider. Our programmes are designed to support both learners and employers in training and upskilling talent across industries. We have a team of expert tutors to support learners at each step of the way on programme and beyond.



LMP EDUCATION
TRAINING PROVIDER

020 3836 4380



INFO@LMPEDUCATION.ORG

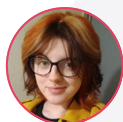


WWW.LMPEDUCATION.ORG



Our Learners Say

“I am grateful for the extensive support provided on this apprenticeship by my LMP tutor. My employer has ensured that I receive valuable opportunities to expand my skillset, from participating in training sessions to being involved in key events such as student trips and wellbeing initiatives.”



- Ghost Rigby, Level 3 SEND Teaching Assistant Apprentice, Institute Holistic Education.

Work with Us

We can support you and your organisation to use the power of apprenticeships. LMP Education is a registered market leading training provider for Teaching apprenticeships. Our team can support you with recruiting an new apprentice or upskilling existing staff members. Benefit from our free recruitment service and book a discovery call today to find out more about this programme.



Employers - book a discovery call with an apprenticeship expert
bit.ly/lmp-call



Candidates - enrol today online
check website for cohort start date
lmp-group.co.uk/courses/teaching-assistant-send-pathway-apprenticeship

