



Proudly part of



Specialist Teaching Assistant

LEVEL 5 APPRENTICESHIP PROGRAMME

Empowering educational excellence through advanced teaching support.

98%

RETENTION RATE

and career progression
after completing this
programme

INVEST IN YOUR TEAM

- High Quality Training
- Industry Relevant Content
- Commitment to Excellence
- Expert Support and Mentoring
- Excellent Safeguarding and Wellbeing
- Focus on Personal and Professional Development

#INSPIRINGAMBITION



PROGRAMME SUMMARY

5

Apprenticeship level
Level 5



Typical duration
18 months



Training method
Blended learning



Assessment method
Professional discussion
underpinned by a
portfolio of Evidence and
Q&A



Cost/funding value
£0/£12,000

nqual.

EPA organisation
NQual

About the Programme

The Level 5 Specialist Teaching Assistant Programme is the natural progression route for teaching assistants seeking to further their careers in education. This programme offers the opportunity to specialise in a particular field of study such as :

- 1) **Special Educational Needs and Disabilities (SEND)**
- 2) **Social and Emotional Wellbeing**
- 3) **Specific curriculum provisions like early reading or EAL**

Learners can work in primary, secondary, special schools, alternative provision, further education institutions such as sixth forms and colleges, and a range of other educational settings such as music hubs.

Who is this programme for?

This programme is designed for those passionate about supporting children, this programme offers existing TAs the opportunity to specialise in a specific field.

Employer Benefits

- Having a **Level 5 Specialist Teaching Assistant** on your team is a huge asset for any school. These are highly skilled professionals who go beyond general classroom support to provide targeted, strategic input—especially in areas like SEND, literacy, numeracy, behaviour and intervention work.
- **Specialist Knowledge:** Level 5 TAs have in-depth training in specific areas (e.g., autism, speech & language, SEMH, dyslexia), meaning they can provide more effective support for individual pupil needs.
- **Improved Intervention Delivery:** They're trained to plan, deliver, and assess structured interventions—boosting impact and helping close attainment gaps.
- **Stronger Pupil Outcomes:** With a skilled TA running evidence-based interventions, you're more likely to see measurable improvements in attainment, behaviour and confidence.
- **Reduces Teacher Workload:** Teachers can delegate aspects of planning, differentiation, or behaviour strategies, freeing them to focus on high-impact teaching.
- **Cost-Effective Specialist Support:** They provide a level of support that would otherwise require external consultants or additional teacher time—delivering strong ROI for your staffing budget.

Boosts Ofsted Readiness: Demonstrates strong in-school capacity to deliver quality teaching and intervention, especially in areas like personal development, behaviour and SEND.

Specialist Teaching Assistant

LEVEL 5 APPRENTICESHIP PROGRAMME

Typical Job Roles

Academic mentor, music educator, social and emotional wellbeing teaching assistant, specialist education support, specialist learning support, specialist teaching assistant, subject teaching assistant, SEND teaching assistant.

Progression Routes

Starting as a Specialist Teaching Assistant (Level 5) offers a solid foundation in educational support, and there are several routes you can take to progress in education. Here are some common career paths and steps you could consider: Teacher Training (Qualified Teacher Status - QTS) to become a fully qualified teacher, Specialist Roles in Education, Coordinator (SENCO), Pastoral Support Lead, Learning Mentor, Leadership and Management & Specialised Support and Therapy Roles.

Career Pathways



Specialist Teaching Assistant
Level 5



Senior Teaching Assistant Role

#INSPIRINGAMBITION

Learner Benefits

- 
-  **A big step up:** and a brilliant opportunity for professional and personal growth.
 -  **Specialist Expertise:** Learn in-depth strategies for supporting learners with specific needs—like autism, ADHD, dyslexia, SEMH, or speech & language..
 -  **Confident Intervention Delivery:** You'll be trained to plan, deliver, and evaluate structured interventions that genuinely make a difference.
 -  **Stronger Understanding of Learning:** Gain insights into how children and young people develop, learn, and overcome barriers.
 -  **Step Into Senior Roles:** A Level 5 qualification prepares you for higher-responsibility roles, such as HLTA, pastoral lead, SEN support specialist, or intervention coordinator.
 -  **Gateway to Teaching or Further Study:** You can use your Level 5 as a stepping stone toward teacher training, SENDCo support roles, or Level 6/degree-level study.
 -  **Learn While You Work:** This Level 5 programme is designed to fit around your current job, so you can immediately apply what you're learning.
 -  **Recognised Qualification:** upon completion of this programme, you will receive a nationally recognised certification.
 -  **Ongoing support:** access to a LMP Tutor providing 1-2-1 support throughout your Course.
 -  **Pride in Professionalism:** You're not "just a TA"—you're a trained, specialist practitioner with real impact and value.

What will you learn

The Level 5 Specialist Teaching Assistant Apprenticeship programme provides a comprehensive level of knowledge and skills to support Teaching Assistants progress their career and specialise in a certain area. On this programmes there are 14 core duties and 6 specialist duties. You will need to decide on your specialist pathway at the beginning of the programme.



Off the job training

Off-the-job hours are a vital part of this apprenticeship. Training is directly relevant to the programme and can take many forms, including:

- Individual study time for reflection and growth
- Apprenticeship tutor sessions and webinars
- Group learning opportunities (like inset days)
- Shadowing experienced colleagues
- Mentoring from line managers
- 1:1 performance reviews and feedback
- Attending meetings and briefings
- Learning new policies
- Relevant YouTube/TV shows
- Professional development
- Online courses
- Enrichment activities
- Research and learning
- Collaborative planning/resource preparation

At LMP, the supportive tutors will work closely with you to create a personalised training plan that meets all requirements for this programme.



Striving for a Distinction - we provide distinction criteria for all apprentices and encourage everyone to strive for the best outcome.

End point assessment

End-point assessment (EPA) is **an independent assessment that takes place at the end of the apprenticeship training**. This is to test that the apprentice is competent in their occupation. All apprentices must complete an EPA. There are a variety of assessment methods to test apprentices' competency.

Gateway

Gateway takes place before an EPA can start. LMP Education will work with the employer to **review their apprentice's knowledge, skills and behaviours**. This period of time is used to see if the apprentice has met the requirements of the apprenticeship set out in the apprenticeship standard, and they are ready to take the assessment.

Functional Skills

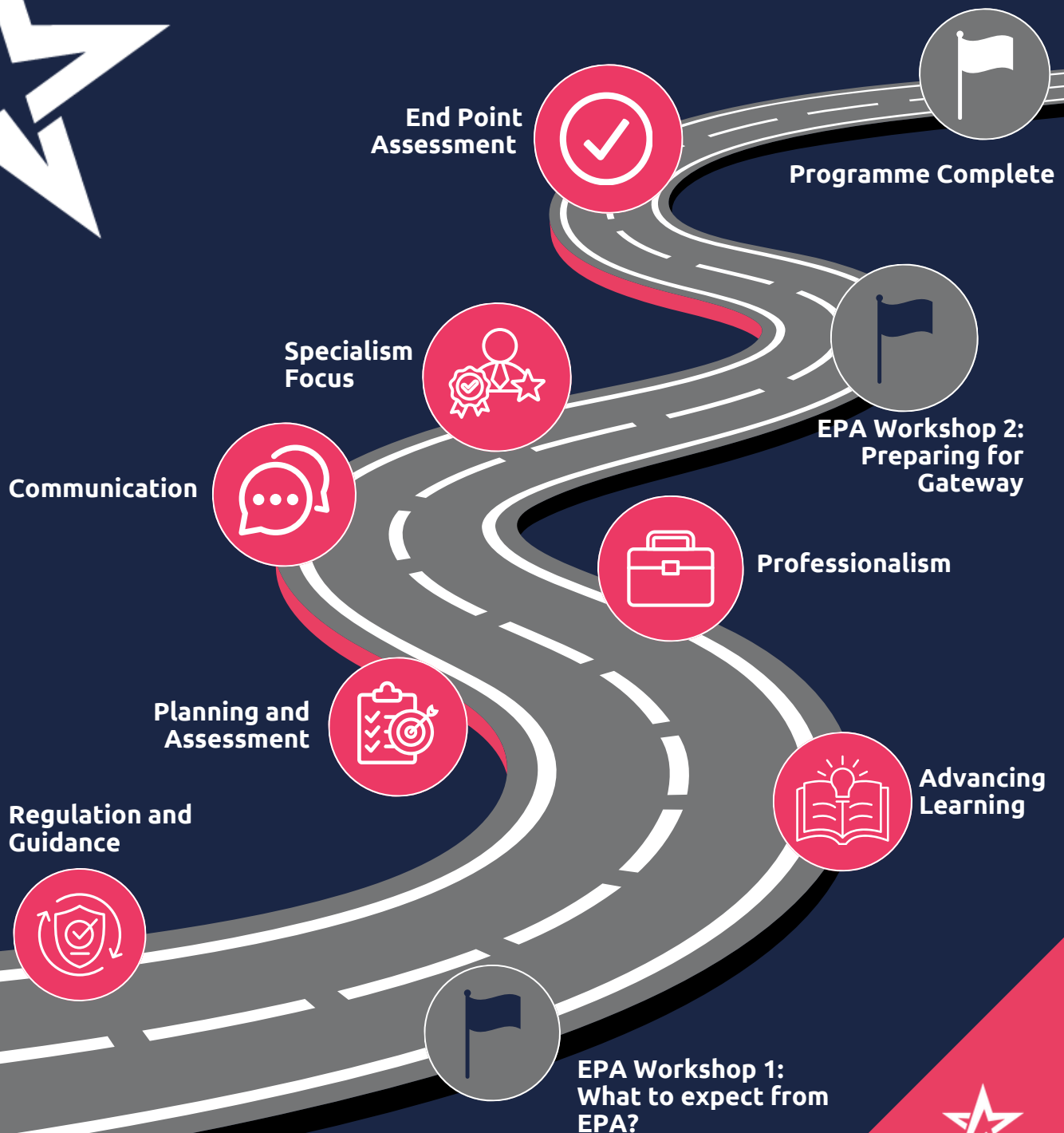
LMP Education provides functional skills support to all our learners. While functional skills are no longer a requirement for learners who are 19+, LMP still offers functional skills training for those who choose to take the qualification.

[Learn more about functional skills at LMP →](#)



MILESTONES OF LEARNING

Specialist Teaching Assistant
LEVEL 5 APPRENTICESHIP PROGRAMME



EPA Workshop 1:
What to expect from
EPA?

EPA Workshop 2:
Preparing for
Gateway



MODULES INCLUDE

Regulation and guidance

Content includes: Understanding and Implementing Statutory and Non-Statutory Frameworks & Fostering Inclusive, Sustainable, and Enabling Learning Environments

Advancing Learning

Content includes: Theories of Learning and Developmental Contexts, Effective Teaching Strategies and Overcoming Barriers & Creating Safe and Enabling Learning Environments

Planning and Assessment

Content includes: Understanding Learners and Promoting Inclusion, Integrating Curriculum, Planning and Assessment & Effective Assessment for Improved Outcomes

Professionalism

Content includes: Professional Growth, Resilience, and Ethical Practices, Strategies to develop resilience & Research to inform practices

Communication

Content includes: Learner Voice, Professional Support, and Effective Teamwork & Communication and Building Collaborative Relationships

Specialism focus

Choose from one of the following pathways

- 1) SEND pathway
- 2) Curriculum pathway
- 3) Social and Emotional Wellbeing pathway

Why LMP Education

LMP Education is an award winning training provider. Our programmes are designed to support both learners and employers in training and upskilling talent across industries. We have a team of expert tutors to support learners at each step of the way on programme and beyond.



LMP EDUCATION
TRAINING PROVIDER

020 3836 4380



INFO@LMPEDUCATION.ORG



WWW.LMPEDUCATION.ORG



Our Learners Say

“This programme allowed me to develop my skills and grow as an educator. The specialised SEND pathway gave me advanced knowledge and I am now much more confident in my role and in supporting my pupils.”



- Kim, Specialist Teaching Assistant Apprentice.

Work with Us

We can support you and your organisation to use the power of apprenticeships. LMP Education is a registered market leading training provider for Teaching apprenticeships. Our team can support you with recruiting a new apprentice or upskilling existing staff members. Benefit from our free recruitment service and book a discovery call today to find out more about this programme.



Employers - book a discovery call with an apprenticeship expert
bit.ly/book-lmp-call



Candidates - enrol today online
check website for cohort start date
bit.ly/ta-l5

