



Proudly part of



# AI Practitioner for Schools

## LEVEL 4 APPRENTICESHIP PROGRAMME

Support AI implementation and improve efficiency with bespoke training for school staff.

**NEW**

**FUNDED TRAINING PROGRAMME  
FOR SCHOOLS & MATS**

High Quality Training  
Industry Relevant Content  
Expert Support and Mentoring

### This programme supports school staff

- Reduce workload through automation
- Improve operational efficiency
- Strengthen data quality and reporting
- Implement AI safely and ethically
- Develop governance and risk management processes
- Lead digital change confidently
- Build sustainable systems and workflows

**#INSPIRINGAMBITION**



## PROGRAMME SUMMARY

4

Apprenticeship level  
**Level 4 Higher**



Typical duration  
**14 months**



Training method  
**Weekly virtual classroom  
delivery – practical  
sessions**



Assessment method  
**On programme  
assessment - project and  
professional discussion**



Cost/funding value  
**£0 / £18,000**

## About the Programme

Support AI implementation, automations and efficiencies in school through this NEW Level 4 AI Practitioner apprenticeship. This fully funded training programme helps school and trust staff lead the safe, ethical and practical use of AI and automation in real day to day operations.

## Who is this programme for?

This Level 4 AI Practitioner for Schools Apprenticeship is ideal for school staff with an interest in AI tools and technological changes. Managers, leaders or support staff with responsibility for systems and processes.

## Employer Benefits

Artificial intelligence is a valuable tool for any organisation to implement in its organisation; however, schools more than any other organisation need to ensure the implementation of AI tools is done ethically and safely. Having an AI Practitioner at your setting will ensure that your school can make the most of recent technological development while keeping the safety of pupils and staff at the forefront.

- **Build An AI-Ready School:** Stay ahead of the changes and promote safe AI use by equipping your workforce with the skills to thrive in an AI driven world.
- **Reduce administration:** The AI Practitioner for Schools programme focuses on reducing administrative burden, improving data quality and supporting safer, more efficient school operations through responsible use of AI and lowcode automation tools.
- **Embedded real-world learning:** From early in the programme, learners identify a priority process, design a safe solution and implement improvements that deliver measurable impact, such as time saved, fewer errors and clearer reporting. This means schools see benefits during the 14 months, not just at the end.
- **Adhere to Ofsted regulation:** According to Ofsted's latest guidance on AI, How Ofsted looks at AI during inspection and regulation, Ofsted does not inspect AI as a standalone judgement area, nor does it require schools to adopt AI, but inspectors will consider how AI is used and what impact it has on pupils, staff and leaders within the existing inspection framework. What matters is whether leaders make sensible decisions, manage risks and can explain how any use of AI supports outcomes, safeguarding and data protection rather than undermining them. By having a designated member of staff to ensure the appropriate adaptation of AI you can ensure your school meets Ofsted's guidance on AI.

# AI Practitioner for Schools

LEVEL 4 APPRENTICESHIP PROGRAMME

## Typical Job Roles

AI Coordinator, Teacher, School Business Manager, Operations Manager, Data/MIS Lead, Central Services Staff, Digital and AI Lead and Automation and Systems Lead.

## Progression Routes

This apprenticeship programme supports staff in developing to roles including AI Implementation Lead, Data or MIS Lead in school.

## Career Pathways



**AI Practitioner for  
Schools**

Level 4



**Digital and AI Lead**

# Learner Benefits



**Coordinate the ethical and responsible** use of AI and automation within school and trust environments



**Identify opportunities** to reduce workload through automation of administrative and operational processes



**Improve data quality, reporting and information flow** across school systems



**Design, build and manage** low-code automation solutions using commonly used school technologies



**Lead change safely and effectively**, including staff engagement, risk management and compliance



**Apply safeguarding, data protection and GDPR principles** to the use of AI and digital tools in schools



**Deliver a substantial workplace project** that creates measurable impact for their school or trust

## What will you learn

The AI Practitioner for Schools Apprenticeship is delivered over 14 months through a blended model that combines live online learning, specialist coaching and a substantial workplace project. Learning and assessment are fully integrated, meaning apprentices demonstrate competence through real work carried out in their school or trust rather than a separate end-point assessment.

This programme is made up of 9 modules that are designed to develop learners' knowledge of AI systems and support them in making an impact in their organisation. Modules include: Strategic and Ethical Adoption - Awareness and Principles, Strategic and Ethical Adoption - Human-centred Implementation and Governance, Governance, Assurance, and Risk Management - Risk Identification and Control Design and Testing, Evaluation and Iteration.



# Off the job training

Off-the-job hours are a vital part of this apprenticeship. Training is directly relevant to the programme and can take many forms, including:

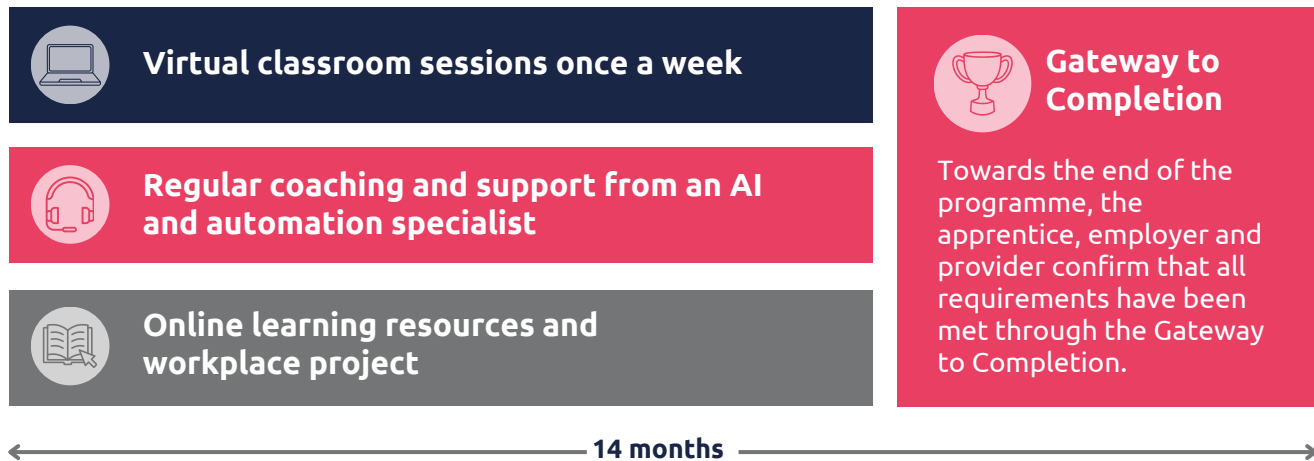
- Individual study time for reflection and growth
- Apprenticeship tutor sessions and webinars
- Group learning opportunities (like inset days)
- Shadowing experienced colleagues
- Mentoring from line managers
- 1:1 performance reviews and feedback
- Attending meetings and briefings
- Learning new policies
- Relevant YouTube/TV shows
- Professional development
- Online courses
- Enrichment activities
- Research and learning
- Collaborative planning/resource preparation

At LMP, the supportive tutors will work closely with you to create a personalised training plan that meets all requirements for this programme.



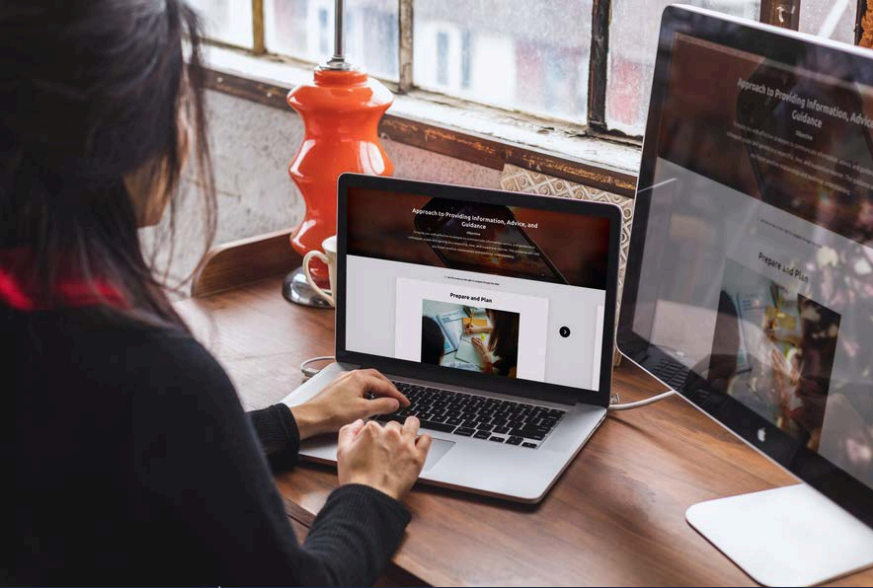
**Striving for a Distinction** - we provide distinction criteria for all apprentices and encourage everyone to strive for the best outcome.

## Delivery Structure - AI Practitioner for Schools



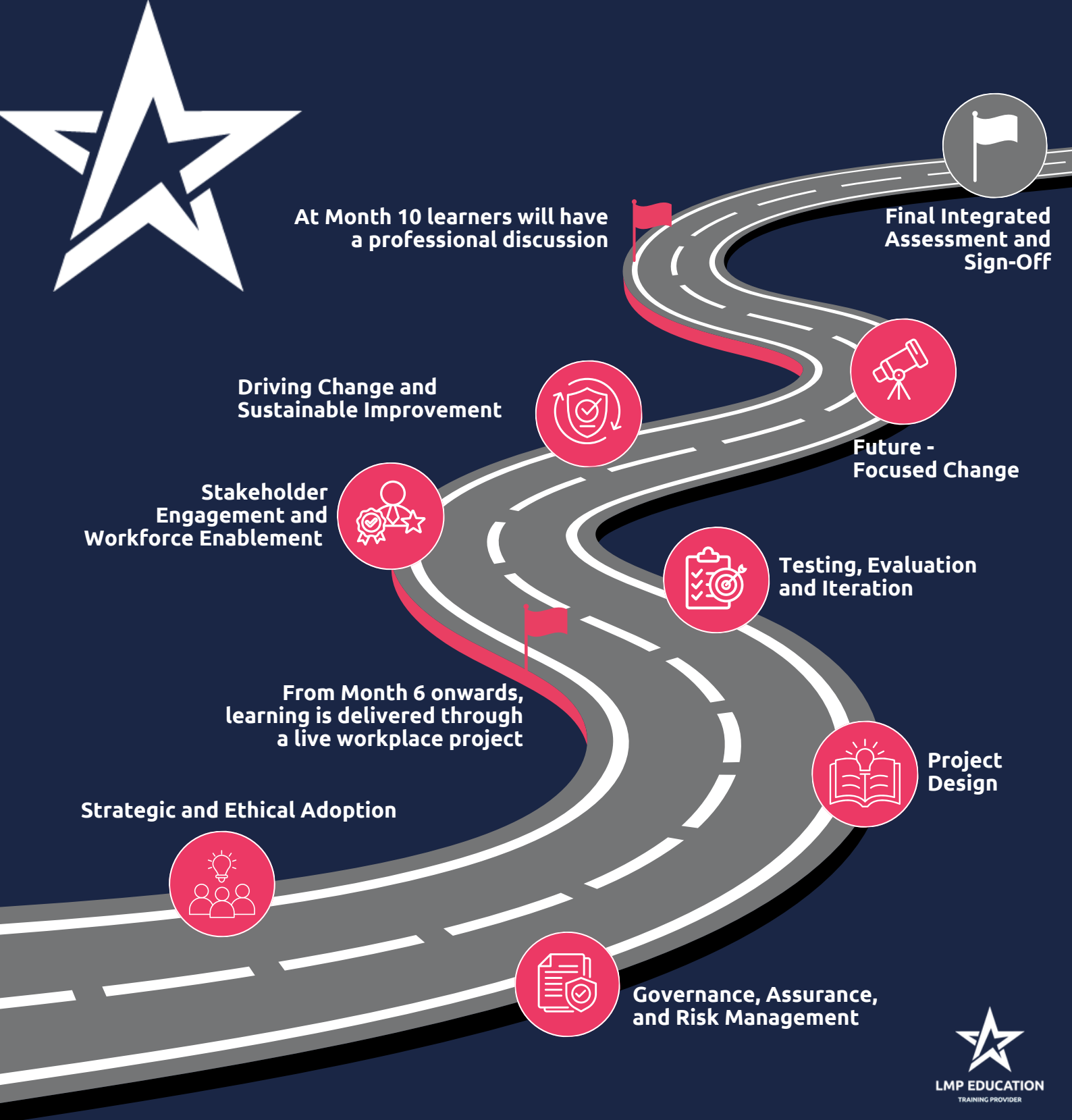
### Workplace project and integrated assessment

A substantial workplace project sits at the heart of the apprenticeship. Apprentices design, implement and evaluate an AI or automation solution that delivers measurable impact, such as reducing administrative workload, improving data quality or strengthening systems and processes. The majority of the assessment is based on this project, with assessment integrated throughout the programme rather than delivered through a standalone end-point assessment.



# MILESTONES OF LEARNING

AI Practitioner for Schools  
LEVEL 4 APPRENTICESHIP PROGRAMME





# MODULES INCLUDE

## Months 1-4

### **Strategic and Ethical Adoption - Awareness and Principles**

**Content includes:** What AI is, how it is already used in schools, and the ethical and professional responsibilities that come with it.

### **Strategic and Ethical Adoption - Human-centred Implementation and Governance**

**Content includes:** Mapping workflows, analyse inefficiencies and identify opportunities where automation could reduce workload or improve consistency

### **Governance, Assurance, and Risk Management - Risk Identification and Control Design**

**Content includes:** Data readiness, GDPR, safeguarding and risk assessment, ensuring any proposed solution is ethical, compliant and appropriate for a school environment

### **Governance, Assurance and Risk Management - Impact Assessment & Ongoing Monitoring**

**Content includes:** Evaluate ethical considerations, data protection implications, safeguarding risks and operational impacts to ensure the solution remains appropriate for a school environment

## From Month 6 onwards, learning is delivered through a live workplace project

### **Project Design - Solution Design and Development**

**Content includes:** Translating mapped processes and project ideas into practical solutions, such as automating reports, streamlining approval processes or connecting existing systems

### **Testing, Evaluation and Iteration**

**Content includes:** Focussing on reliability, security and confidence, ensuring solutions are safe and usable in day-to-day school operations.

### **Stakeholder Engagement and Workforce Enablement**

**Content includes:** Learning how to engage colleagues, provide training and manage change so that new tools are understood, trusted and used effectively across the school or trust.

### **Driving Change and Sustainable Improvement**

**Content includes:** Monitoring the impact of your project, measure benefits such as time saved or errors reduced, and refine solutions over time

### **Future - Focused Change**

**Content includes:** Developing strategies to implement automation and AI responsibly within their school or trust

## At Month 10 learners will have a professional discussion

# Why LMP Education

LMP Education is an award winning training provider. Our programmes are designed to support both learners and employers in training and upskilling talent across industries. We have a team of expert tutors to support learners at each step of the way on programme and beyond.



**LMP EDUCATION**  
TRAINING PROVIDER

020 3836 4380



INFO@LMPEDUCATION.ORG

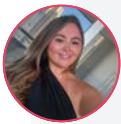


WWW.LMPEDUCATION.ORG



## Our Learners Say

“The best thing about my role and working in a school office is being at the heart of the school community. I love that every day is different and that I get to support staff, pupils, and parents in so many meaningful ways.”



- Sophie Haycock, Bare Trees Primary School

## Work with Us

We can support you and your organisation to use the power of apprenticeships. LMP Education is a registered market leading training provider for apprenticeships. Our team can support you with recruiting an new apprentice or upskilling existing staff members. Benefit from our free recruitment service and book a discovery call today to find out more about this programme.



Employers - book a discovery call  
with an apprenticeship expert  
[bit.ly/book-lmp-call](https://bit.ly/book-lmp-call)



Candidates - enrol today online  
check website for cohort start date  
[bit.ly/L4-AIP](https://bit.ly/L4-AIP)

